

BOESMANSKLOOF HIKING TRAIL

The Boesmansklouf Hiking Trail winds through the Riviersonderend Mountains in the Robertson Karoo region of the south-western Cape. The trail links the small towns of McGregor in the north and Greyton in the south. It passes through the Riviersonderend Conservation Area which is a declared mountain catchment area comprised of state land and private property. The conservation area and the trail are managed by CapeNature, from the Vrolijkheid Nature Reserve near Robertson.

Climate, plants and animals

The summer months are extremely warm and dry while winters are generally cold and wet. Vegetation in the area is typical mountain fynbos with a rich diversity of plant species. Many different protea and erica species occur here, notably the extremely rare *Erica galgebergensis* and *Erica parvulispala*. More than 50 species of the grass-like restios are found in these mountains. Distinctive riverine vegetation grows along the water courses, with typical species being the stream cone-bush and wild almond.

Mammals found in the area include common duiker, grey rhebuck, klipspringer, baboon and dassie. Caracal and small spotted genet are fairly common, and leopard occur but are unlikely to be encountered. Birds include malachite sunbird and Cape sugarbird which are attracted by the vast tracts of sugarbush and common pincushion. Black and booted eagle, jackal buzzard and other raptors may also be seen.

Route information

The trail is approximately 14 km and can be hiked in one day, starting from either McGregor or Greyton. Hikers should note that the trail lies just outside Greyton, while it starts approximately 14 km to the south of McGregor at Die Galg, and transport should be organised accordingly. A popular option is to walk an 'out-and-back' route (28 km in total) and overnight

in either of the two towns where ample private accommodation is available. Private overnight facilities are also available at Die Galg. A series of waterfalls and pools known as Oakes Falls provide swimming and resting opportunities for weary hikers.

Hikers please note:

- The trail is reasonably strenuous and you should be fit and well-equipped.
- Carry water with you, especially during the summer months.
- The trail can be dangerous in extreme winter conditions.
- A valid permit is required and must be carried at all times.
- The hike should be booked well in advance, through CapeNature's reservations office.
- Numbers are restricted to 50 hikers per day, with a maximum of 20 per group.
- No dogs are allowed.
- No fires are allowed.
- No overnight camping is allowed on the trail.
- The flora and fauna are strictly protected.
- Field rangers regularly patrol the route and will assist hikers with information.

Enquiries & Reservations

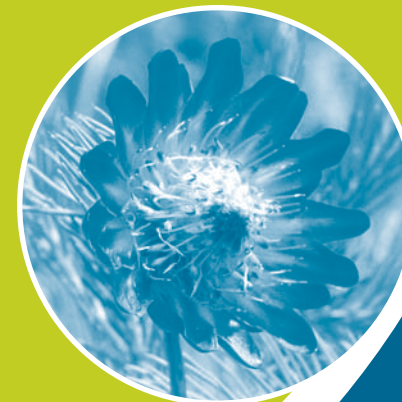
ENQUIRIES: Tel: (023) 625 1621

RESERVATIONS: Tel: (021) 659 3500 or
E-mail: bookings@capenature.co.za

DISCLAIMER OF LIABILITY

All persons entering this conservation area and using its facilities, do so entirely at their own risk. The Western Cape Nature Conservation Board and/or its employees and/or agents and/or its successors in title shall not be liable for any damage, loss, theft, injury, accident or death suffered by any person, howsoever caused.

Right of Admission Reserved.



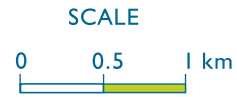
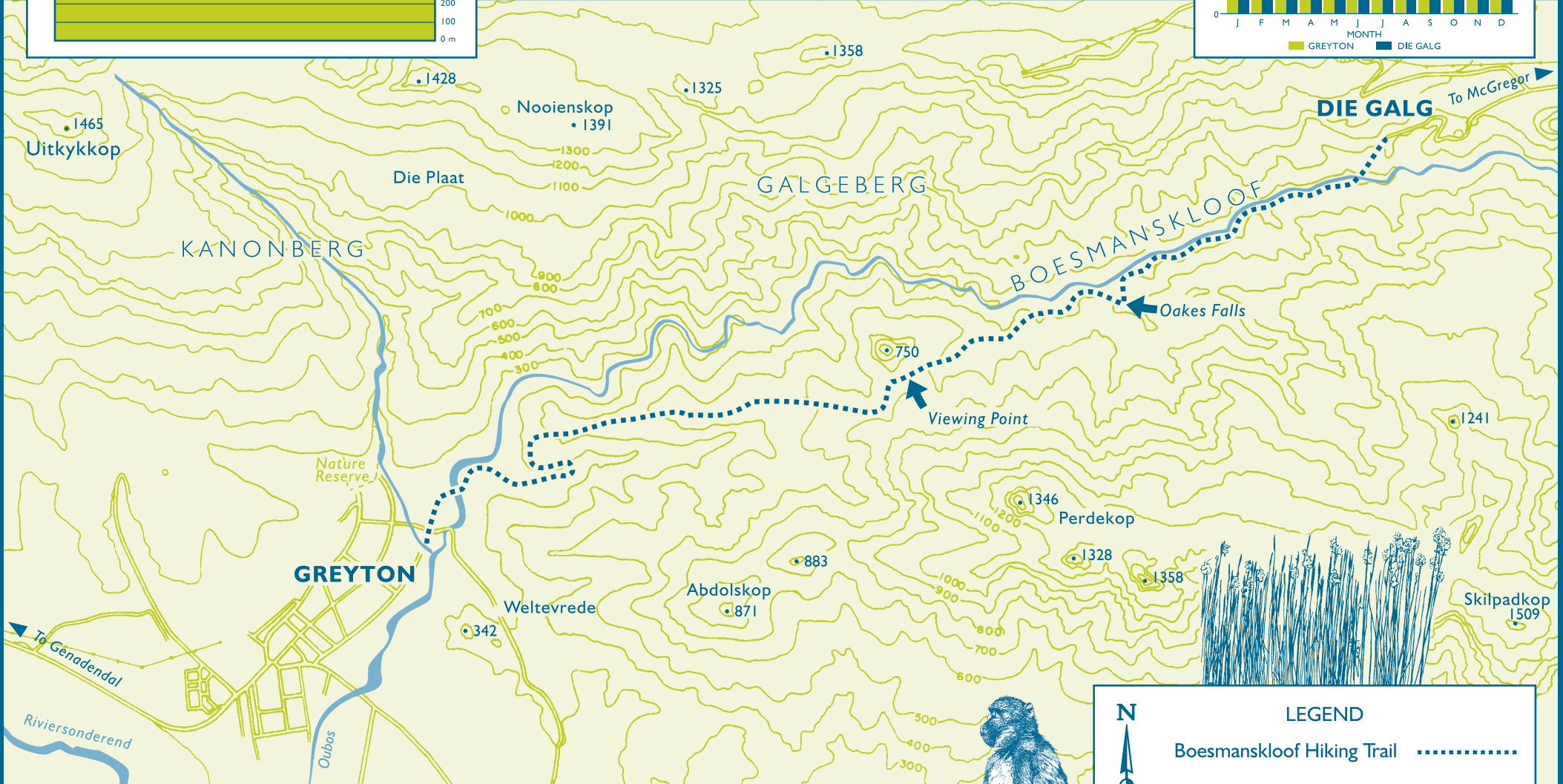
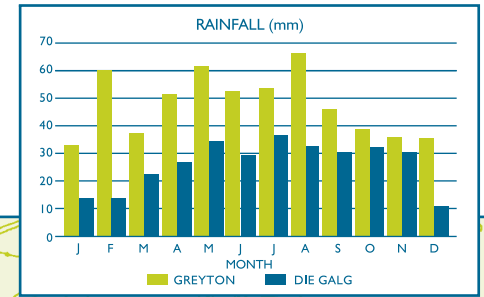
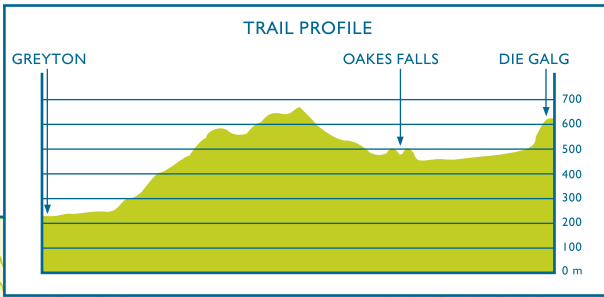
BOESMANSKLOOF HIKING TRAIL

GREYTON –
MCGREGOR

 CapeNature

www.capenature.co.za

GREYTON - MCGREGOR Boesmanskloof —HIKING TRAIL—



LEGEND

- Boesmanskloof Hiking Trail: - - - - -
- Roads: ————
- Contour interval: 100m

N